

# Pratham 3 Rapid

[VIEW DEMO](#)



NEW AGE FDM 3D PRINTER  
WITH AN ADVANCED TECHNOLOGY.



## Rule the Sky of High-Speed 3D Printing

Build Volume : 300 × 300 × 300 mm

Up to 500 mm/s High-Speed Printing

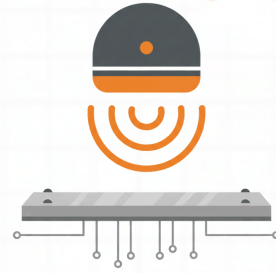
A new-age industrial-grade FDM 3D printer designed for maximum speed, stability, and accuracy. Built with next-generation motion system, high-flow extrusion, and powerful computing capabilities



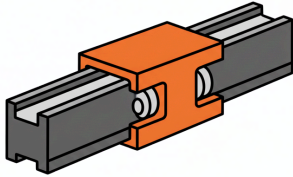
## Key Features



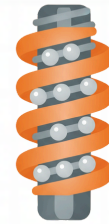
High-Speed Printing (500 mm/s)



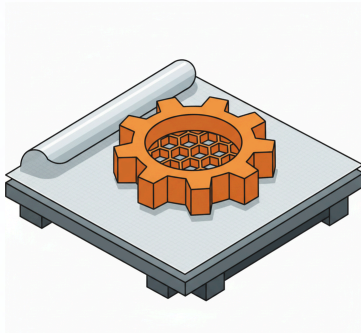
Advanced Automatic Bed Level



THK Linear Motion Guide (XY Axis)



THK Linear Motion Guide (XY Axis)



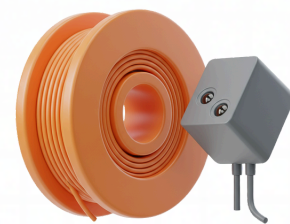
Magnetic PEI Build Plate



High Flow Hotend (30 mm<sup>3</sup>/s)



Enclosed Filament Chamber

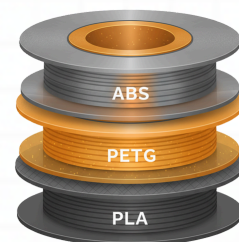


Filament Runout + Jam Sensor



IPS DISPLAY

5-inch IPS Touch Display



Multi-Material Compatibility

## Key Features



300°C High-Temp Nozzle



Connectivity (USB + WiFi + Ethernet)



HEPA+Carbon Filter for Safety



Enclosed Industrial Body



local service, local spares, local support

- Made in India – designed, manufactured and supported locally
- Built to handle long-hour printing in workshop environments
- Local spare parts and India-wide support for minimum downtime
- Hindi/English support options for teams across India



# Technical Specification of Pratham 3.0 Rapid

|                        |  |
|------------------------|--|
| Print Technology       | Fused Filament Fabrication High Speed                        |
| Build Volume           | 300x300x300 mm   |
| Layer Resolution       | 0.08/0.1/0.2/0.3/0.4 mm                                      |
| Dimensional Tolerance  | 0.1 to 0.2 mm  |
| Print Speed            | upto 500 mm/sec High Speed                                   |
| Extruder Temp          | 300°   |
| Printbed Temp          | 120°   |
| Nozzle Size            | 0.4 mm Standard (0.3/0.5/0.6/0.8 mm Changeable)              |
| Heatbed Build Platform | Yes (Magnetic PEI Sheet)                                     |
| Filament Diameter      | 1.75 mm  |
| Filament Compatibility | ABS/PLA/Flexible TPU/PETG/Carbon Fiber Composite<br>ASA/HIPS |
| Operating Control      | Touch Screen Control   |
| Software Bundle        | Orca/Simplify3d License (Optional)                           |
| Operating System       | Windows/Mac  |
| Supported File Formats | STL Or Gcode   |
| Connectivity           | USB/Wi-Fi / Ethernet   |
| Power Requirements     | 230V, 50Hz, 550W   |
| X-Y Gantry             | THK Linear Motion Guide                                      |
| X-Y Precision          | 11 Microns   |
| Z Precision            | 10 Microns (With Industrial Leadscrew)                       |
| Printer Dimension      | 800 L x 630 W x 750 H mm                                     |
| Printer Weight         | 75 KG  |
| Shipping Weight        | 85 KG with accessories                                       |



Plot -36A, Nilkanth Industry, Ved road, Katargam, Surat-395004, Gujarat, India.



[www.make3d.in](http://www.make3d.in)



[info@make3d.in](mailto:info@make3d.in) | [sales@make3d.in](mailto:sales@make3d.in) | [support@make3d.in](mailto:support@make3d.in)



+91 93135 52112 | +91 8866710006

